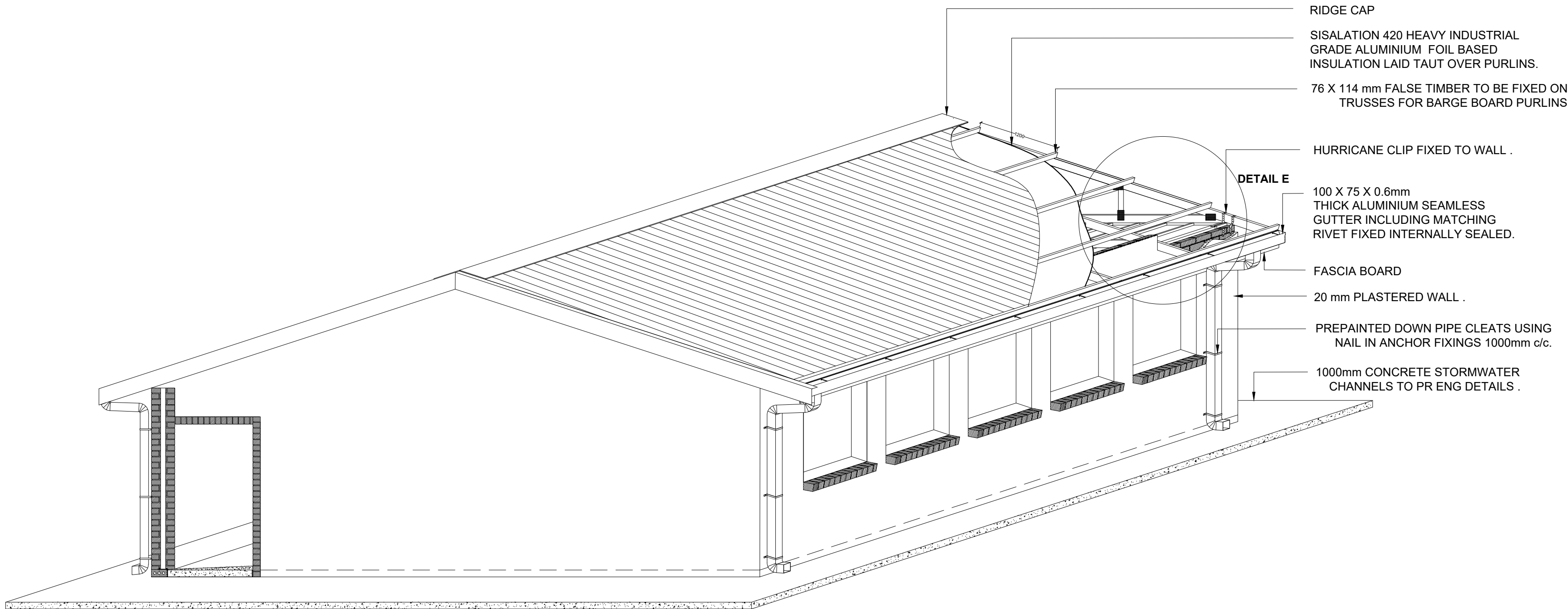
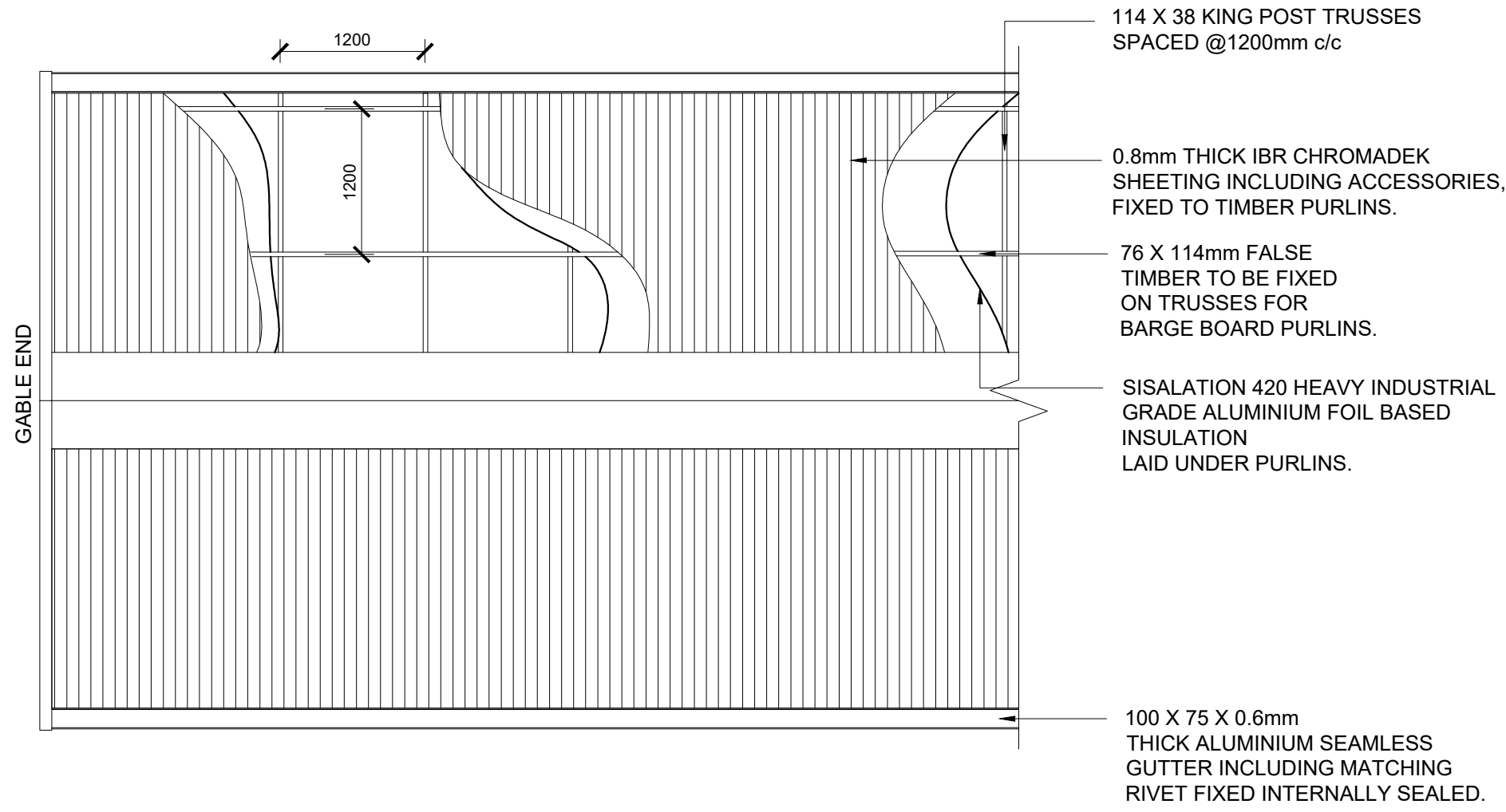


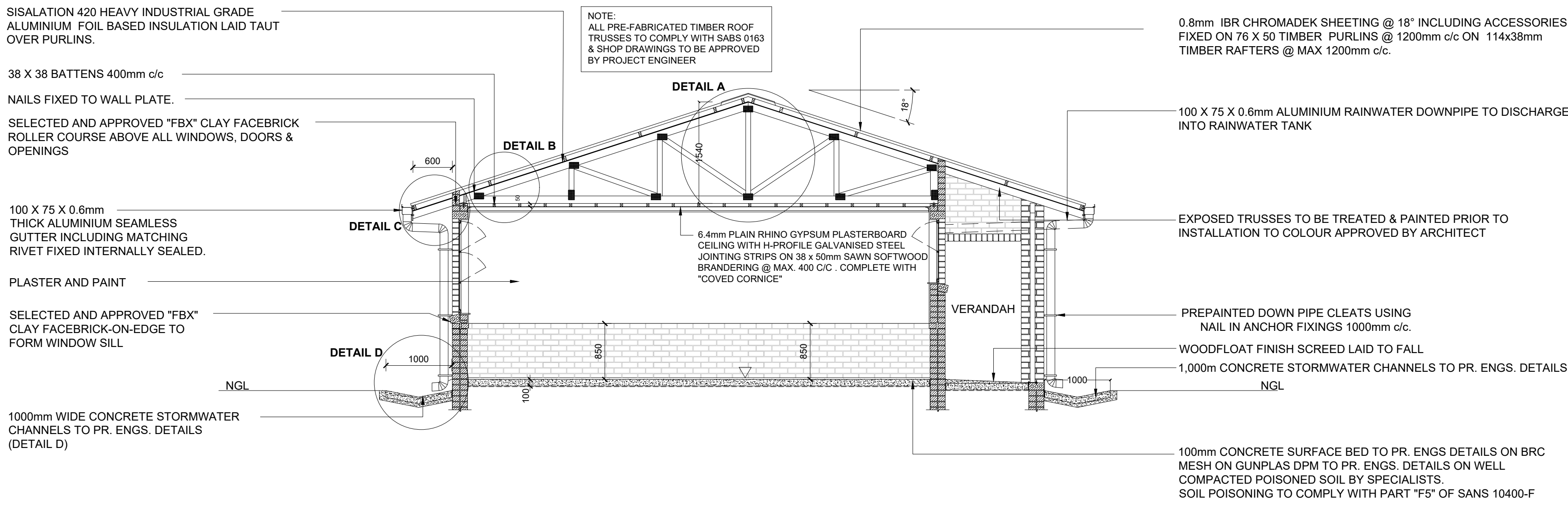
TYPICAL CLASSROOM FLOOR PLAN
SCALE 1:50



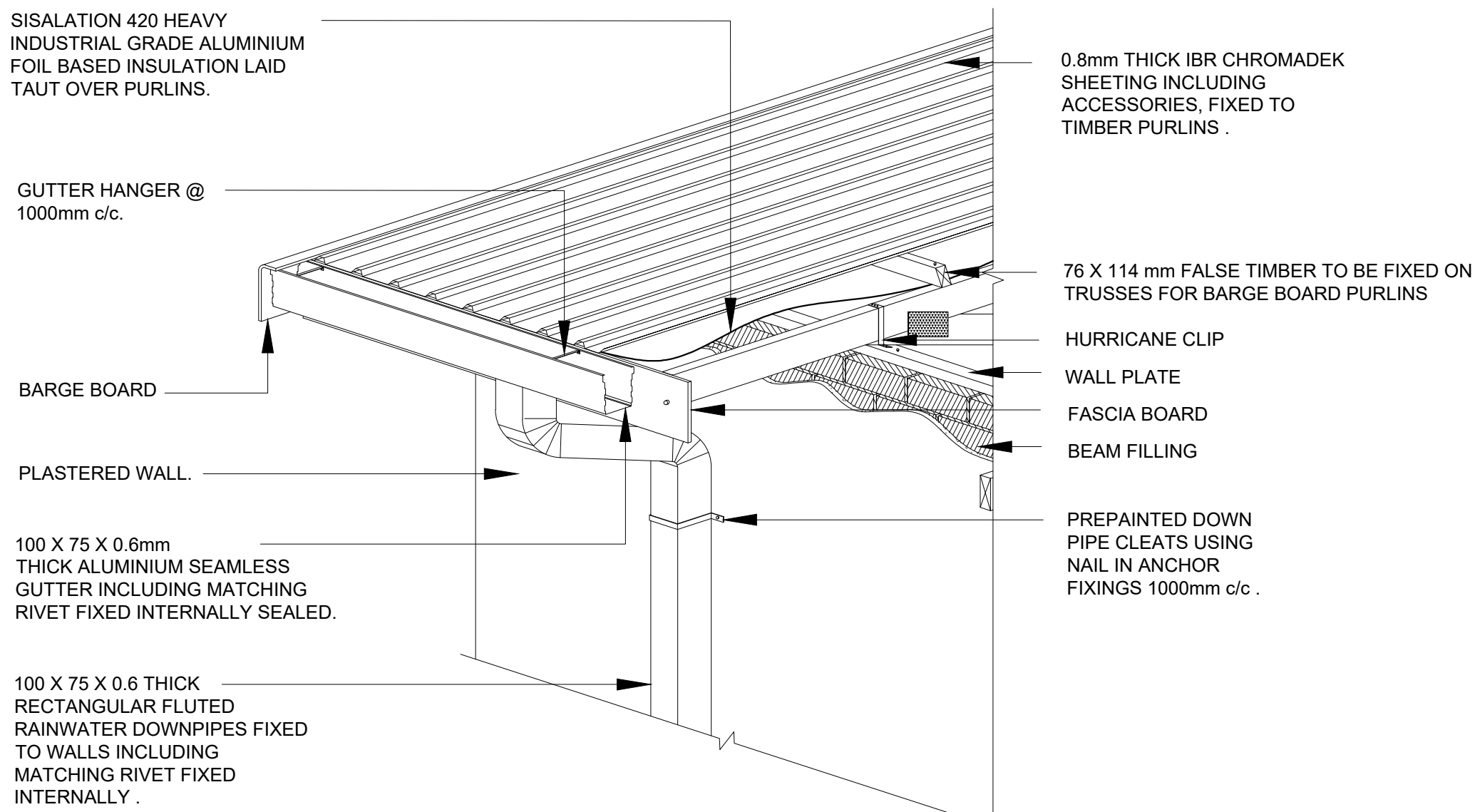
ISOMETRIC ELEVATION: ROOF DETAILS
SCALE 1:50



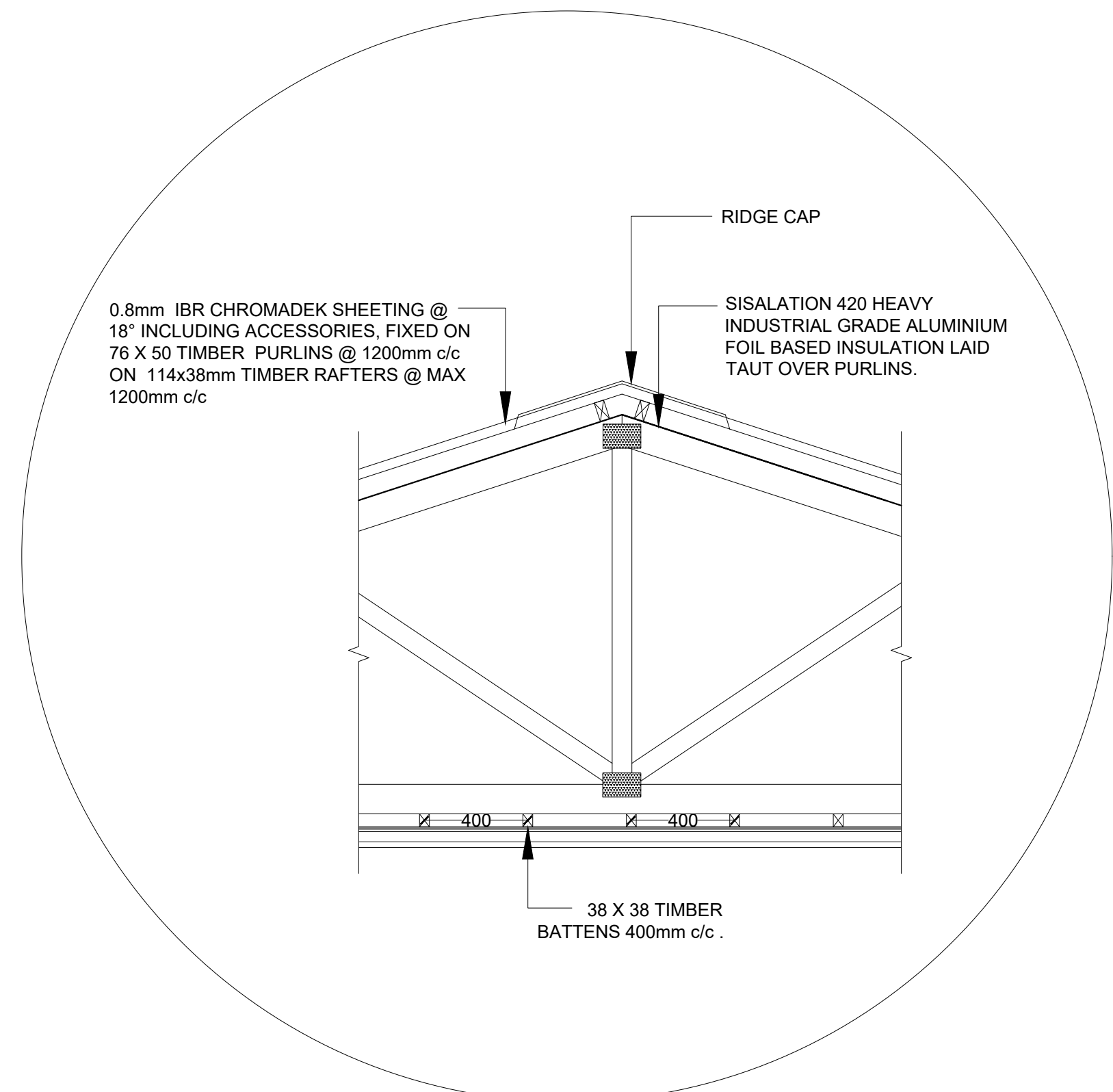
TYPICAL ROOF PLAN
SCALE 1:50



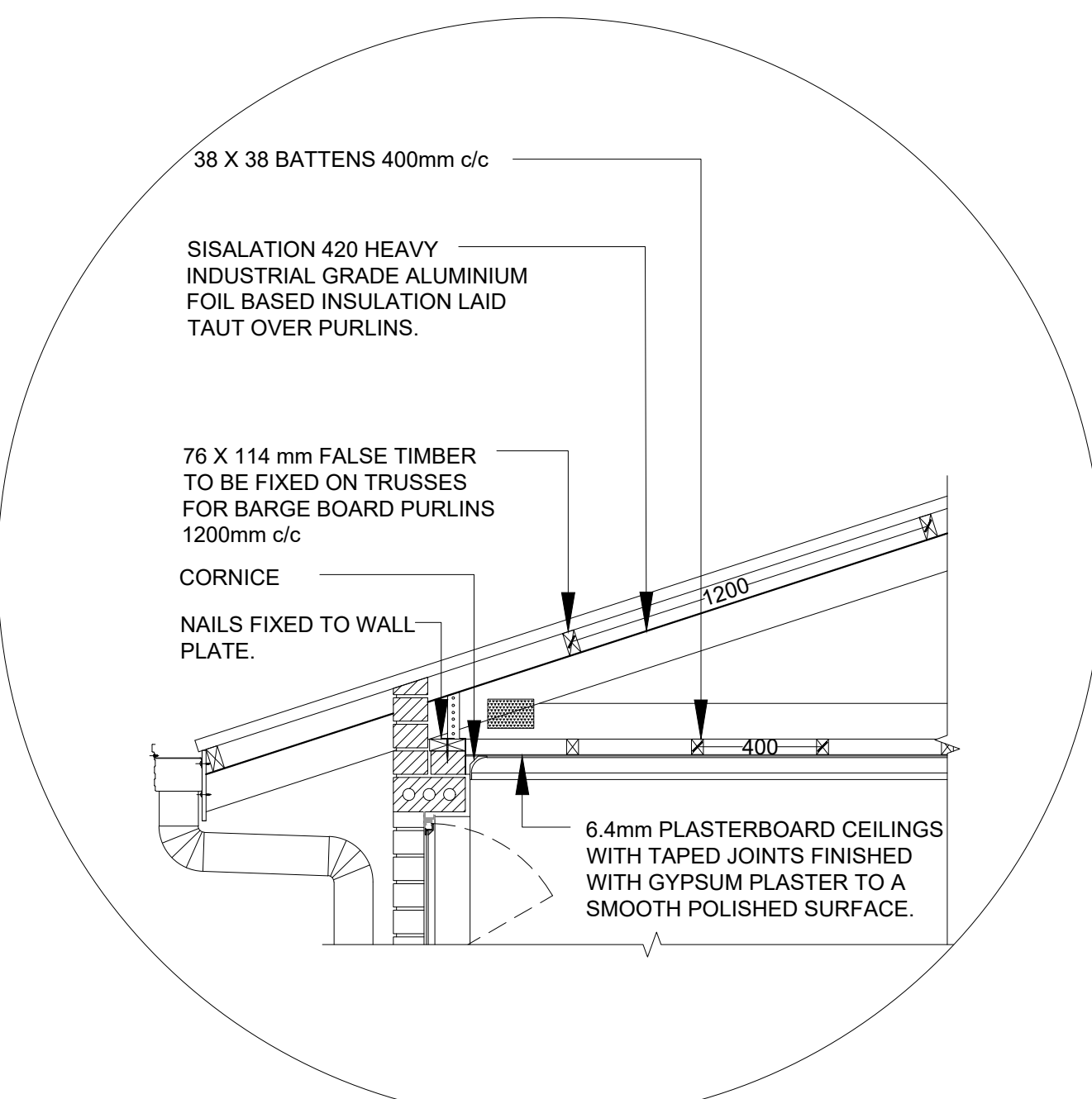
CLASSROOM CROSS SECTION
SCALE 1:50



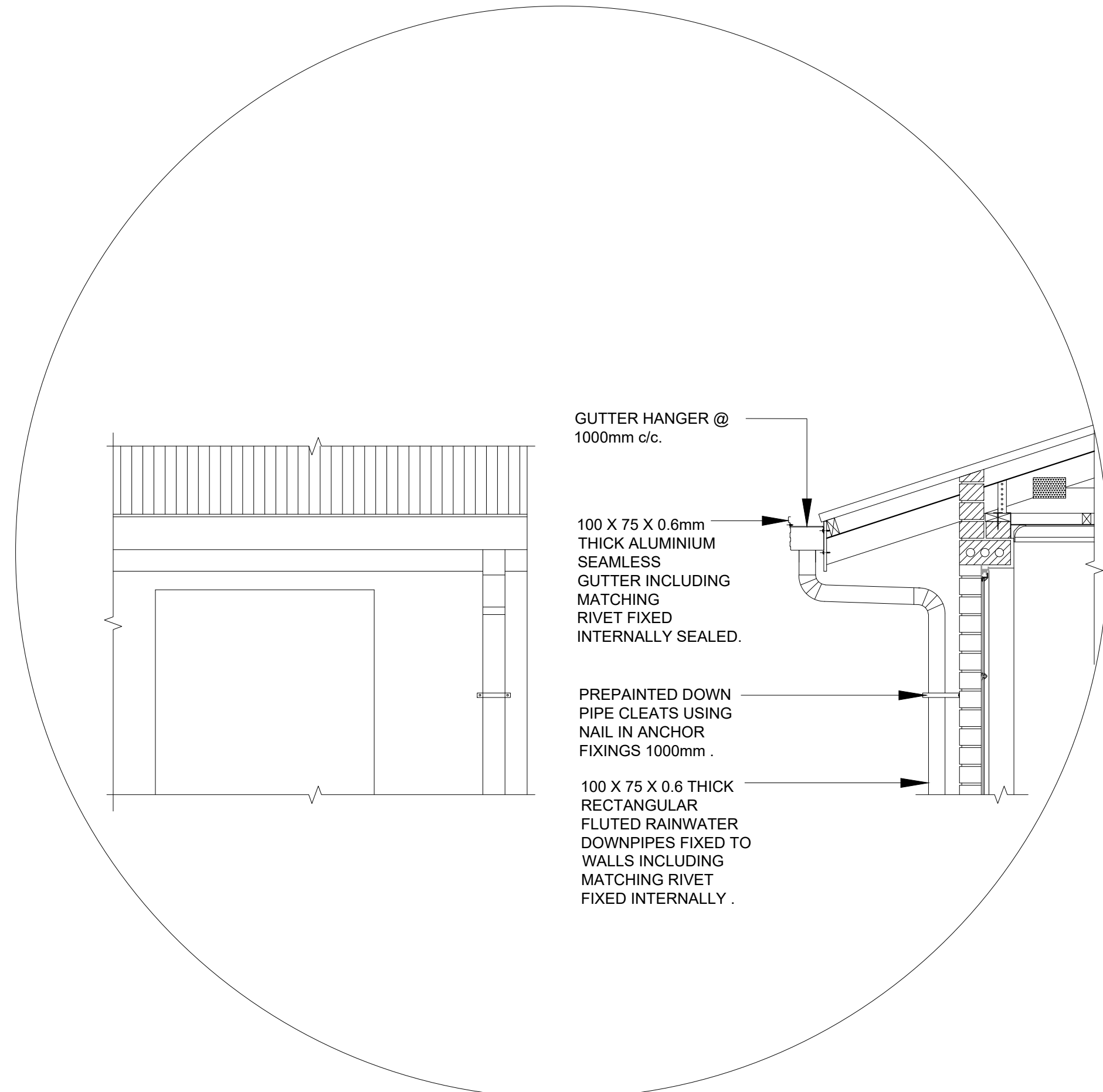
DETAIL E
SCALE 1:20



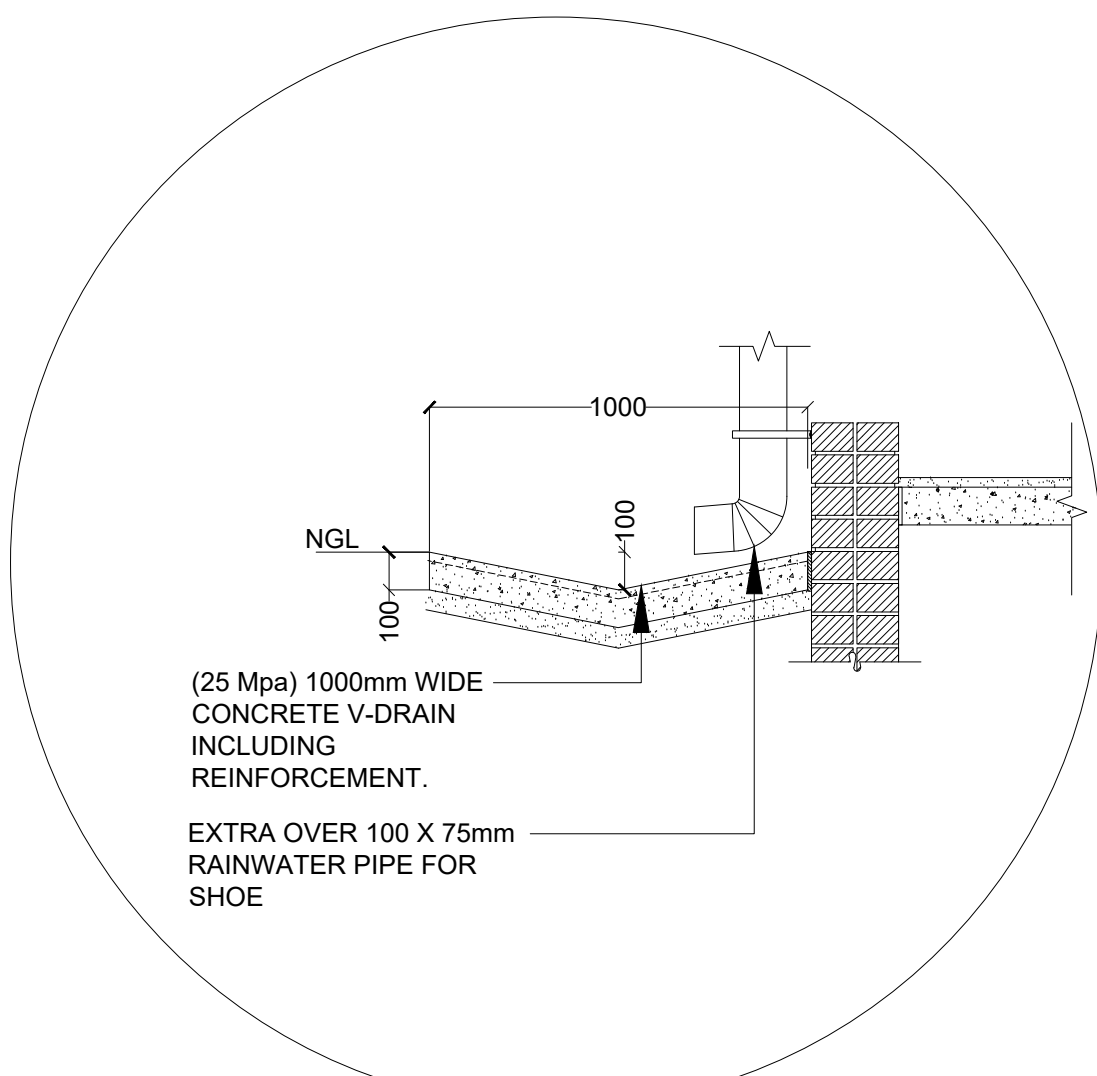
DETAIL A
SCALE 1:20



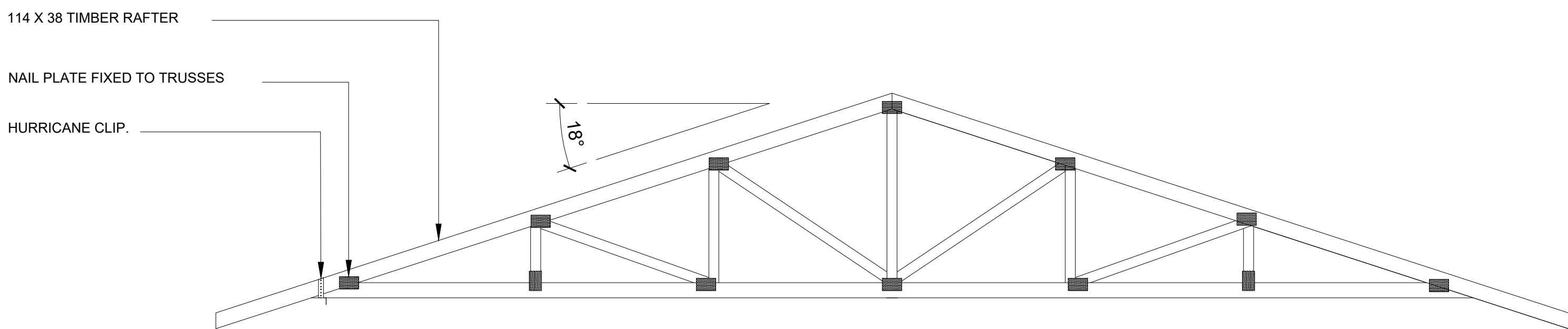
DETAIL B
SCALE 1:20



DETAIL C
SCALE 1:20



DETAIL D
SCALE 1:20



TYPICAL KING POST TRUSS LAYOUT
SCALE 1:20

LEGEND

0	09/2022	FOR TENDER
REV No.	DATE	DESCRIPTION

REVISIONS

CONSULTANT

Impende
CONSULTING ENGINEERS

IMPANDE HOUSE
12 OLD HOWICK ROAD
PIETERMARITZBURG
P.O. BOX X8
CASCADES
3202
KWAZULU NATAL, RSA
TEL - +27 33 342 1418
FAX - +27 33 342 1764

Name: _____
Pr. Eng. No.: _____
Signature: _____ Consulting Engineer Date _____

IMPLEMENTING AGENT:

DBSA DEVELOPMENT BANK OF SOUTHERN AFRICA

CLIENT:

education
Department:
Education
PROVINCE OF KWAZULU-NATAL

DRAWN BY:	S. SITHOLE
CHECKED BY:	L. MTHEMBU

PROJECT:

ASBESTOS REMOVAL
AT
MZINGWENYA PRIMARY SCHOOL
(STORM DAMAGES)

DRAWING TITLE:

TYPICAL DETAILS

SCALES:	DATE:	SHEET:
AS SHOWN	09/ 2022	1 OF 1
DRAWING No.	REVISION No.	
IP 115-004-001	A0	0

FOR TENDER